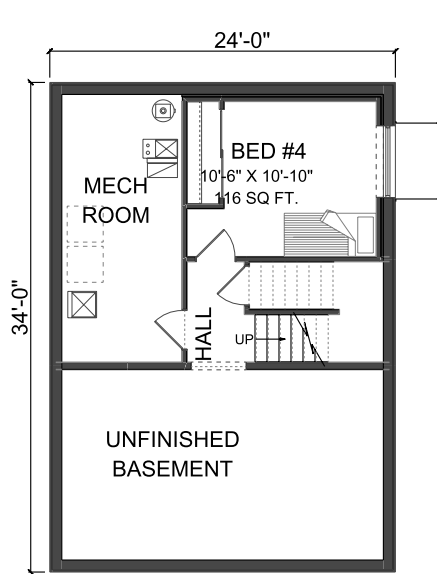
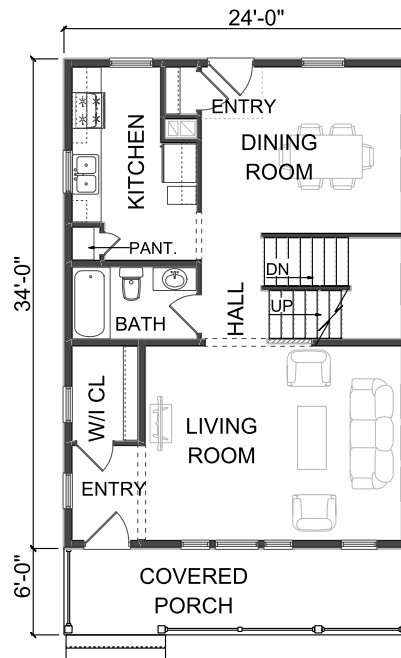




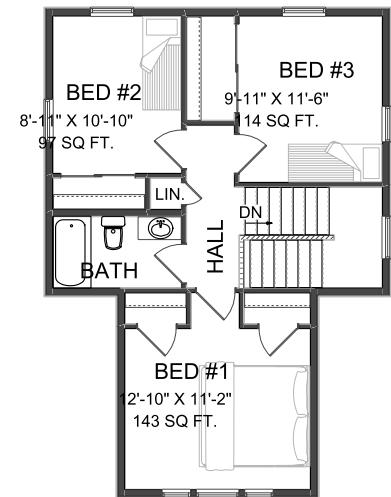
RENDERING MAY NOT REFLECT ACTUAL
CONSTRUCTED HOUSE



BASEMENT FLOOR PLAN



FIRST FLOOR PLAN



SECOND FLOOR PLAN



1954 UNIVERSITY AVE. W.
ST. PAUL, MN 55104

OFFICE: 651-207-1700
FAX: 651-641-8641

**SINGLE FAMILY DWELLING
MODEL: 29TS4-2
DETACHED 2-STALL GARAGE**

**978 BAYARD AVE. E.
ST. PAUL, MN**

**BASEMENT UNFINISHED SQ. FT. = 556
BASEMENT FINISHED SQ. FT. = 260
FIRST FLOOR FINISHED SQ. FT. = 816
SECOND FLOOR FINISHED SQ. FT. = 676**

***TOTAL FINISHED SQ. FT. = 1752**

**Finished area calculated from outside edge of walls*

TOTAL SQ. FT. = 2308

(INCLUDES UNFINISHED BASEMENT)